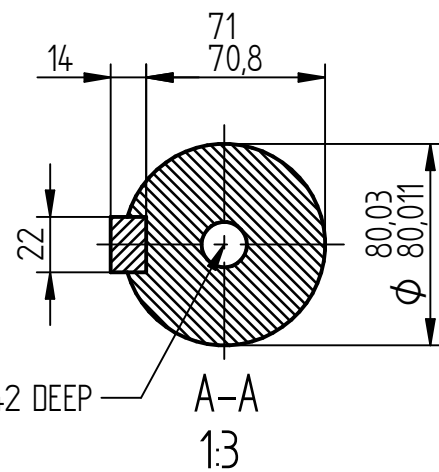
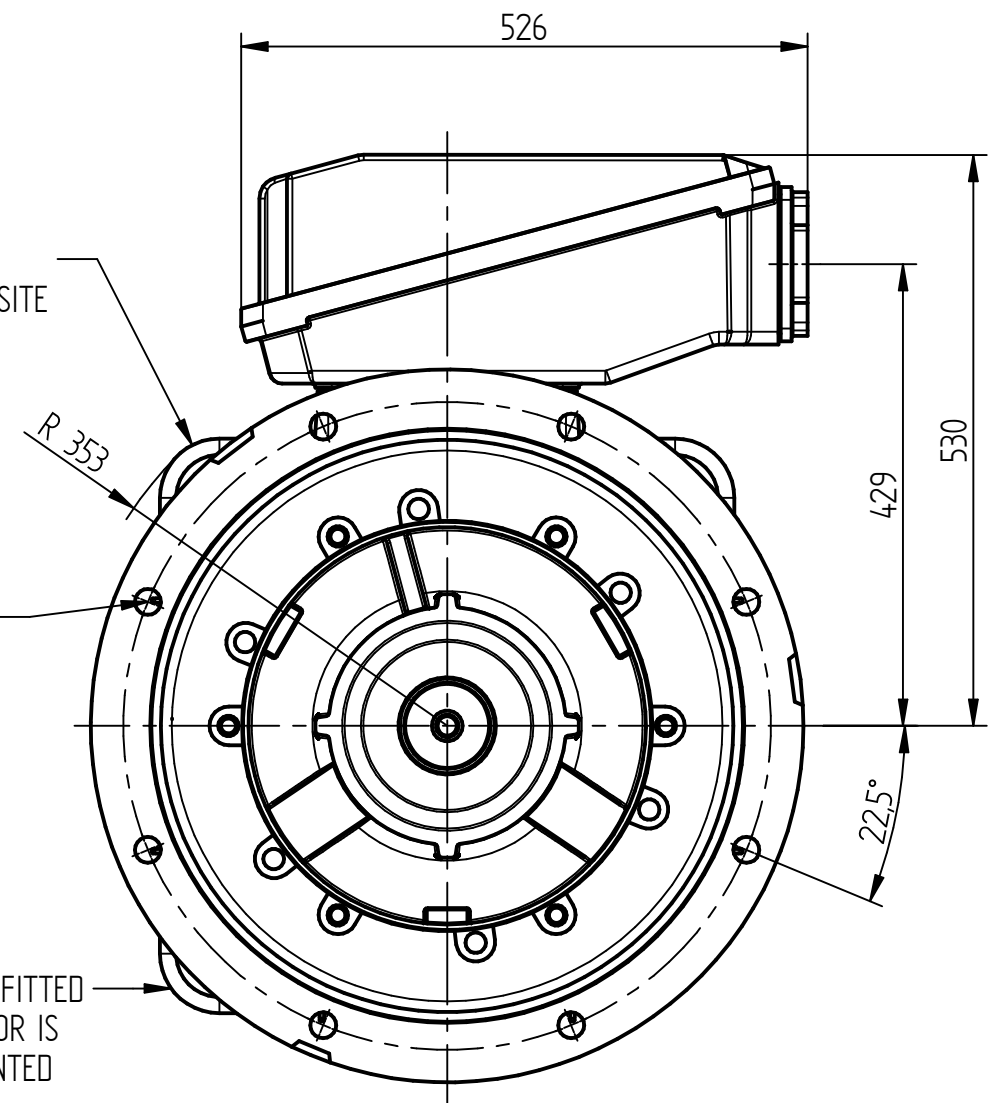


3 LIFTING LUGS
DIAGONALLY OPPOSITE

8 HOLES $\phi 24$
EQUALLY SPACED
ON A 600 P.C.D.

THE LIFTING LUG FITTED
ONLY WHEN MOTOR IS
VERTICALLY MOUNTED



TERMINAL BOX POSITION:

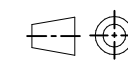
- CAN BE ARRANGED AT EITHER 9, 12 OR 3 O'CLOCK.
- STANDARD TERMINAL BOX POSITION IS 12 O'CLOCK AS SHOWN.

CONDUIT ENTRIES:

- TERMINAL BOX CAN BE ROTATED AT 90° INTERVALS.

ALL MOUNTING DIMENSIONS: ISO 2768-mK ACC TO EN 22768-1/2

ALL DIMENSIONS IN MILLIMETERS



FIRST ANGLE
PROJECTION

**BROOK
CROMPTON**

Produced by ATB Tamel S.A. a company of **ATB**
Technology in Motion

DRG. No. WP-DF315ME B5 4P

DRG. REF.

REVISION:

DATE:

SHEET
SIZE

A3

TITLE:

OUTLINE DIMENSION DRAWING TOTALLY ENCLOSED FAN COOLED
WP-DF315ME 4P FRAME D FLANGE MOUNTED MOTOR

| | NAME | DATE |
|---------|-------|----------|
| DRAWN | SZ | 26-06-19 |
| CHECKED | PG | 26-06-19 |
| SCALE | 1 : 7 | |